

Yuan's RTMP Server Installation Guide

1.1.0.125.5

◆ **Overview**

In this document, we will guide and teach you how to install website server application software that implement RTMP live steaming of AMESDK in the website.

Note!! If user want to crate a RTMP Server, please read this document, if RTMP server is not work, user should verify whether the firewall blocks the live streaming traffic.

◆ **Interrelated Software**

AppServ.2.5.10

AMESDK\SAMPLE\SC500.AAC.STREAMING\

AMESDK\SAMPLE\SC580.AAC.STREAMING\

AMESDK\SAMPLE\NetReceiver.Example

1. AppServ-win32.2.5.10 for Windows 7

◆ Introduction

AppServ is a full-featured of Apache, MySQL, PHP, phpMyAdmin.
User can easy to setup in few minutes.

◆ The package of AppServ 2.5.10

Apache version : 2.2.8

PHP version : 5.2.6

MySQL version : 5.0.51b

phpMyAdmin version : 2.10.3

◆ Downloads Address:

<http://www.appservnetwork.com/>



AppServ Open Project

[PHP code generator](#)
Generate PHP code for any database. AJAX,charts,dynamic forms and more
www.xlinesoft.com/phprunner

AdChoices

A+ A- RESE

Home Downloads AddOns Community FAQ Stats Activity Shopping AJAX Script

Main Menu

- What is AppServ?
- How to install AppServ
- How to use AppServ and directory structure
- Developer Team
- Download Now!
- Version History
- NEWS Archive
- Community & Support
- Statistics Activity
- Donate to AppServ

Lastest Release

AppServ

AppServ 2.6.0

2008-06-10 00:35:27

AppServ 2.5.10

2008-06-10 00:33:27

AppServ Misc

Zend Optimizer 3.3.0...

2007-07-19 00:34:08

UTF-8 Converter

2006-08-03 17:04:37

AppServ 2.5.10 and 2.6.0 with PHP6 New Released !!!

Posted by apples on Saturday, May 10 @ 00:59:41 ICT (596558 reads)

AppServ 2.5.10

- Apache 2.2.8
- PHP 5.2.6
- MySQL 5.0.51b
- phpMyAdmin-2.10.3

**AppServ**

Download
Sourceforge.net : <http://prdownloads.sourceforge.net/appserv/appserv-win32-2.5.10.exe?download>
MD5SUM : 279c0c39866fbecb8a3904969fd5d0f4

AppServ 2.6.0

- Apache 2.2.8
- PHP 6.0.0-dev
- MySQL 6.0.4-alpha
- phpMyAdmin-2.10.3

Download
Sourceforge.net : <http://prdownloads.sourceforge.net/appserv/appserv-win32-2.6.0.exe?download>
MD5SUM : e3a108c9b17f3572e53c07f52d236481

([Read More...](#) | Score: 4.57)

Languages



English

Donate to AppServ

**DONATE**

\$5 US

**DONATE**

\$10 US

**DONATE**

\$15 US

**DONATE**

\$20 US

AppServ-win32.2.5.10

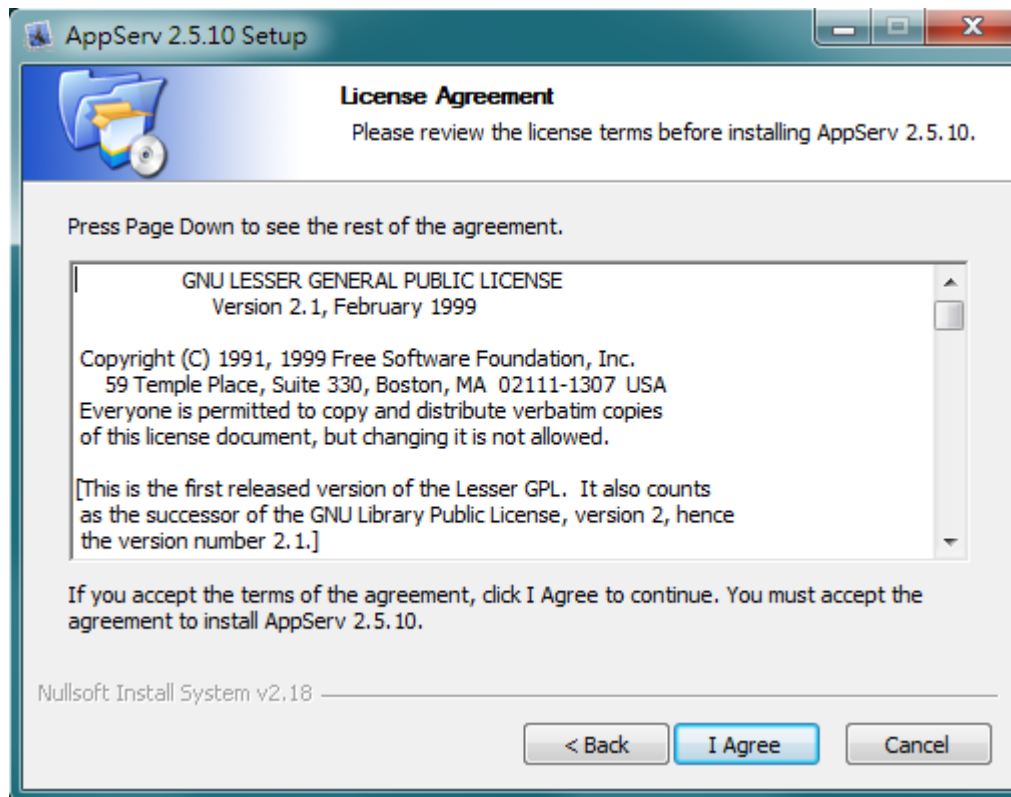
Installation Step

1. Double click appserv-win32-2.5.10.exe to install, then click [Next] to go to next step.



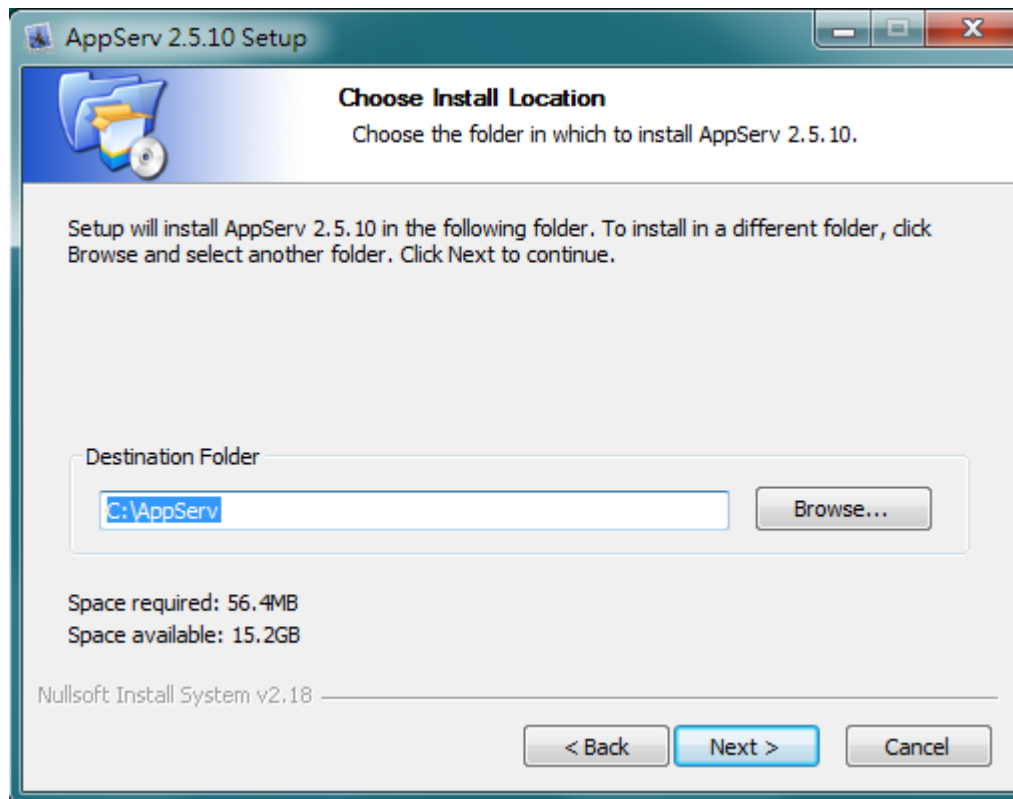
AppServ-win32.2.5.10 Installation Step

2. License Agreement, click [I Agree] to go to next step.



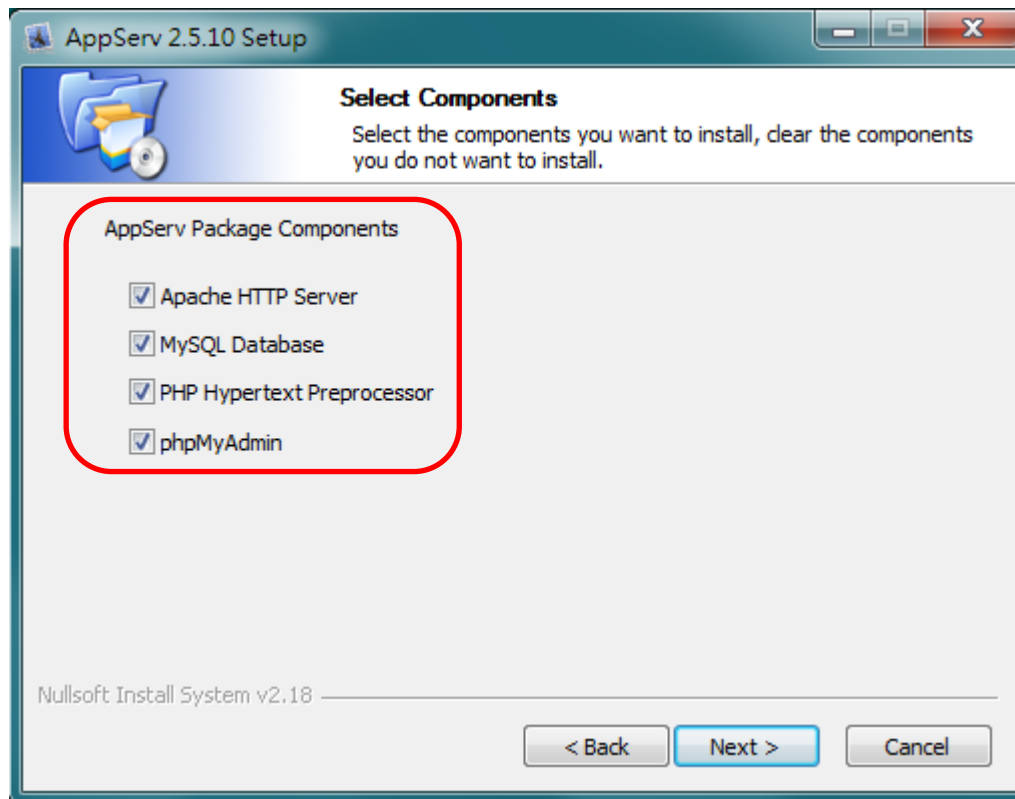
AppServ-win32.2.5.10 Installation Step

3. Choose install location, and then click [Next] to go to next step.



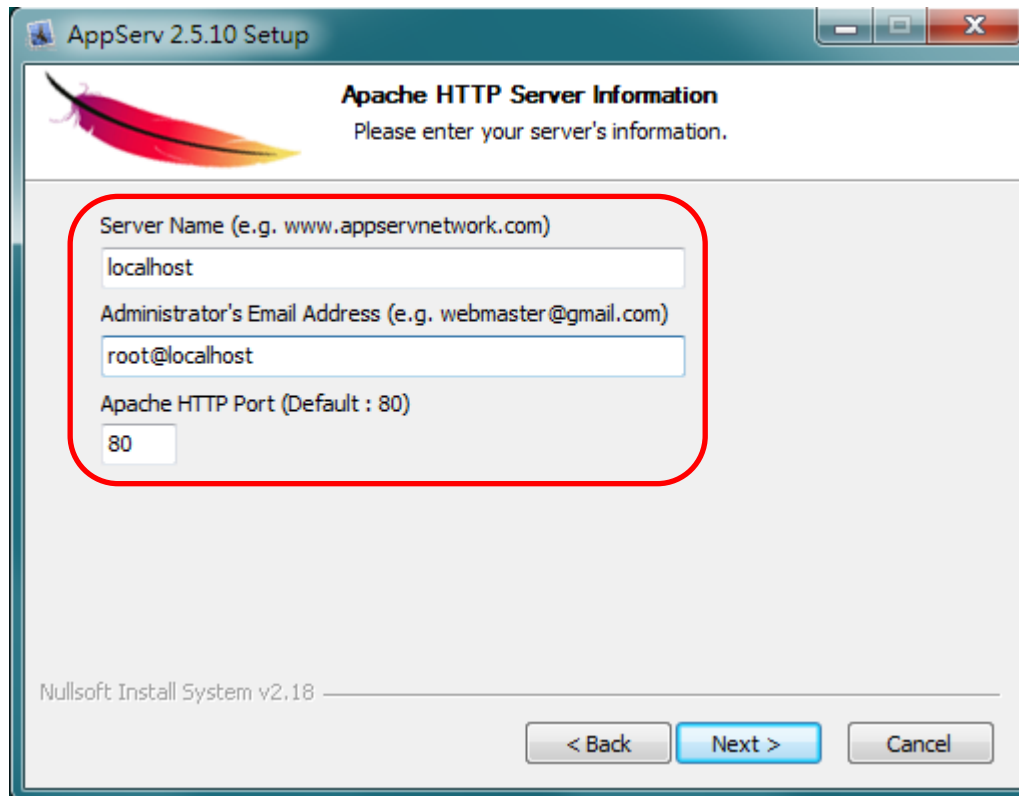
AppServ-win32.2.5.10 Installation Step

4. Select all appserv package components it's, and then click [Next] to go to next step.



AppServ-win32.2.5.10 Installation Step

5. Please specify Apache Configure, and then click [Next] to go to next step.



The image shows a Windows-style installation window titled "AppServ 2.5.10 Setup". Inside the window, there is a section titled "Apache HTTP Server Information" with a feather icon and the instruction "Please enter your server's information." Below this, there are three input fields: "Server Name (e.g. www.appservnetwork.com)" with the value "localhost", "Administrator's Email Address (e.g. webmaster@gmail.com)" with the value "root@localhost", and "Apache HTTP Port (Default : 80)" with the value "80". A red rounded rectangle highlights these three input fields. At the bottom of the window, there is a status bar that says "Nullsoft Install System v2.18" and three buttons: "< Back", "Next >" (which is highlighted in blue), and "Cancel".

AppServ 2.5.10 Setup

Apache HTTP Server Information
Please enter your server's information.

Server Name (e.g. www.appservnetwork.com)
localhost

Administrator's Email Address (e.g. webmaster@gmail.com)
root@localhost

Apache HTTP Port (Default : 80)
80

Nullsoft Install System v2.18

< Back Next > Cancel

AppServ-win32.2.5.10

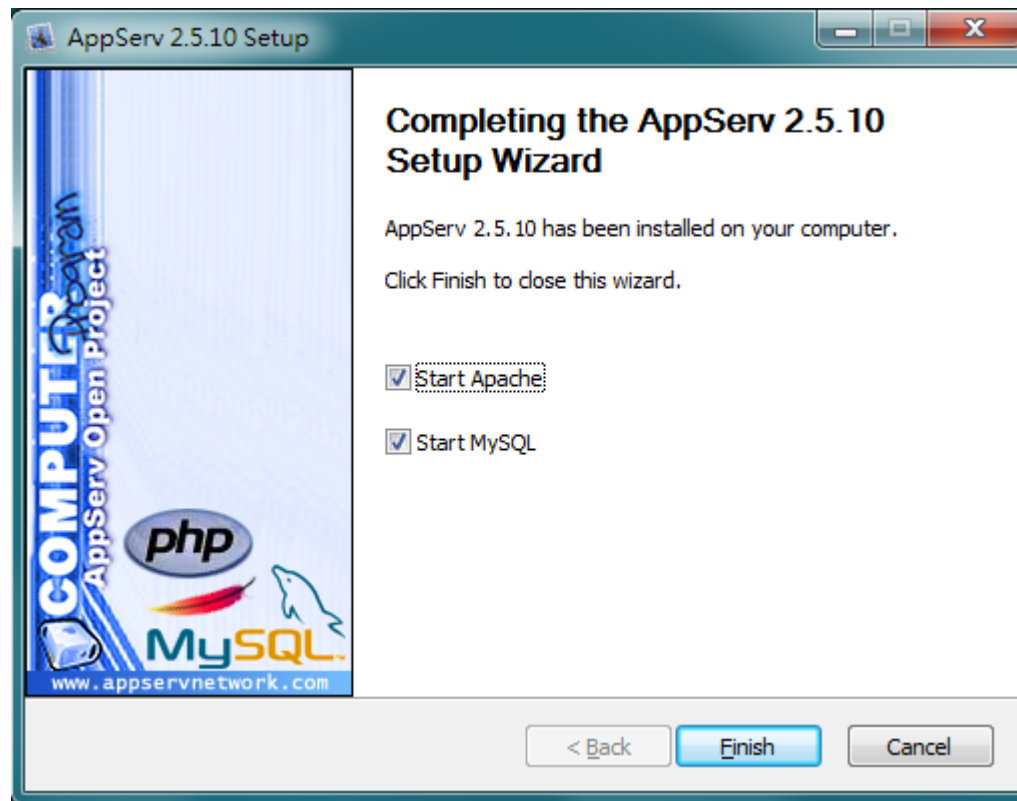
Installation Step

6. Please specify MySQL Configuration and password, and then click [Next] to go to next step.



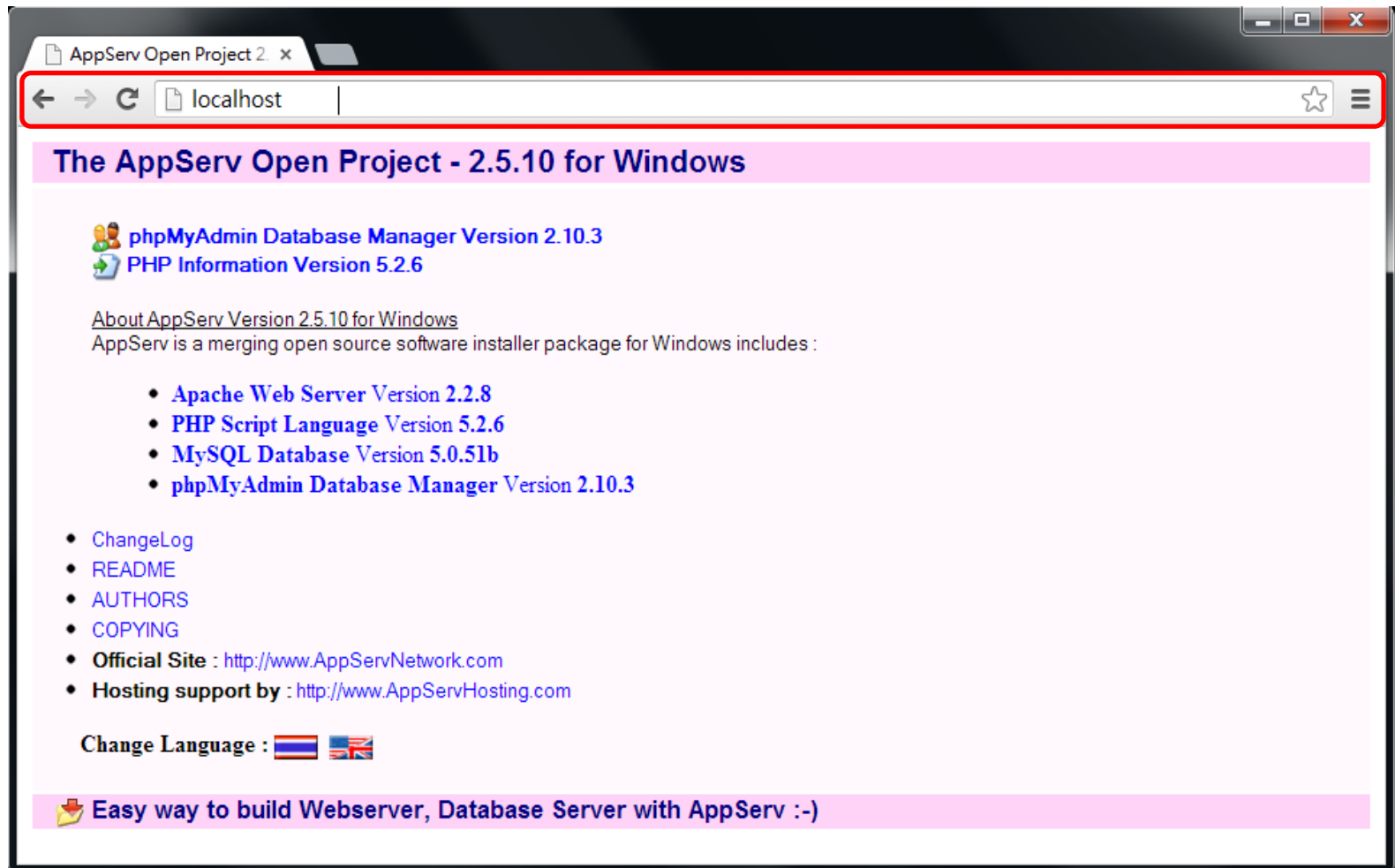
AppServ-win32.2.5.10 Installation Step

7. Complete AppServ setup , and then click [Finish] to end this setup.



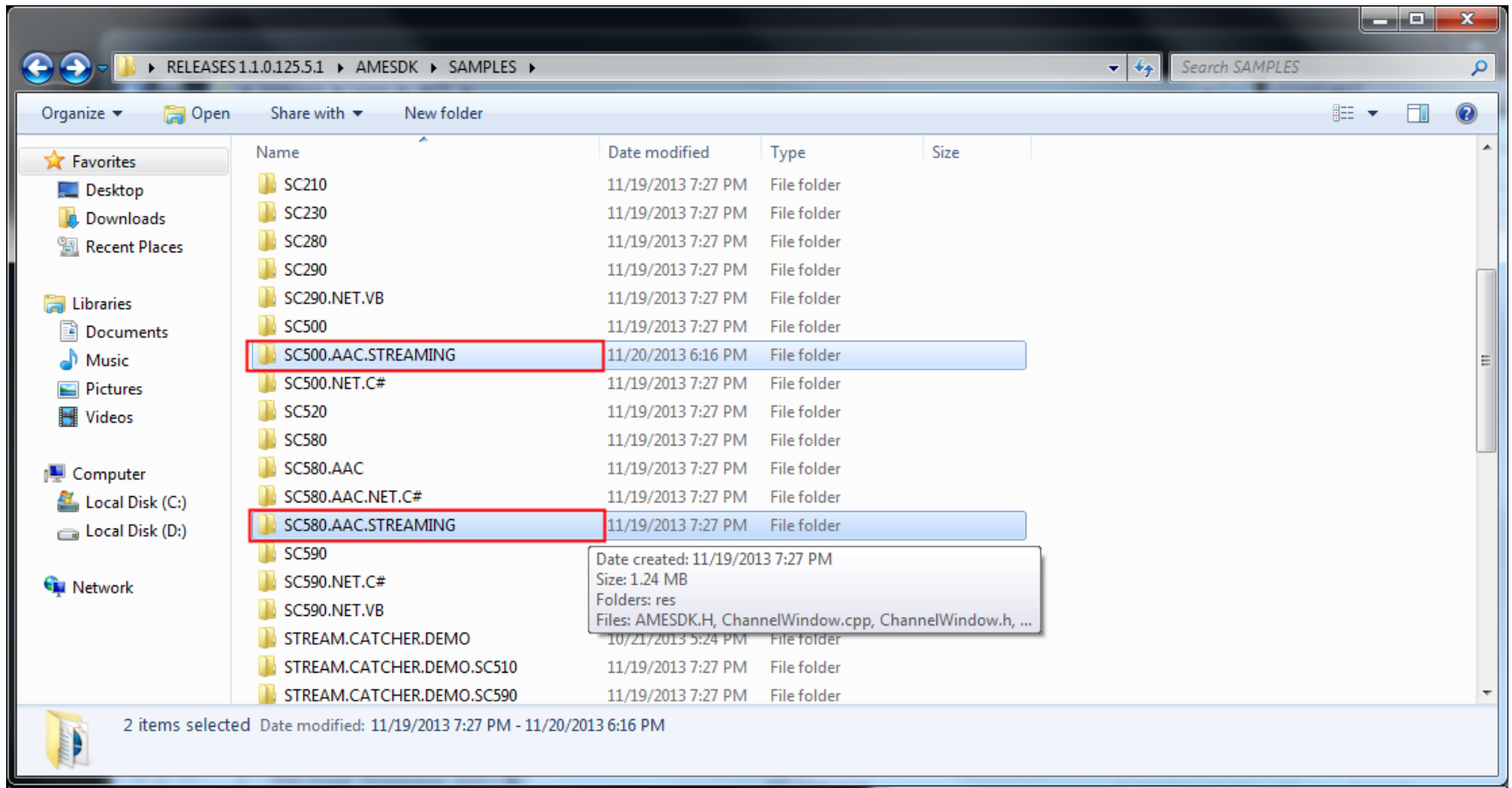
AppServ-win32.2.5.10 Installation Step

8. Start AppServ, and then brows to <http://localhost> to see your new website.



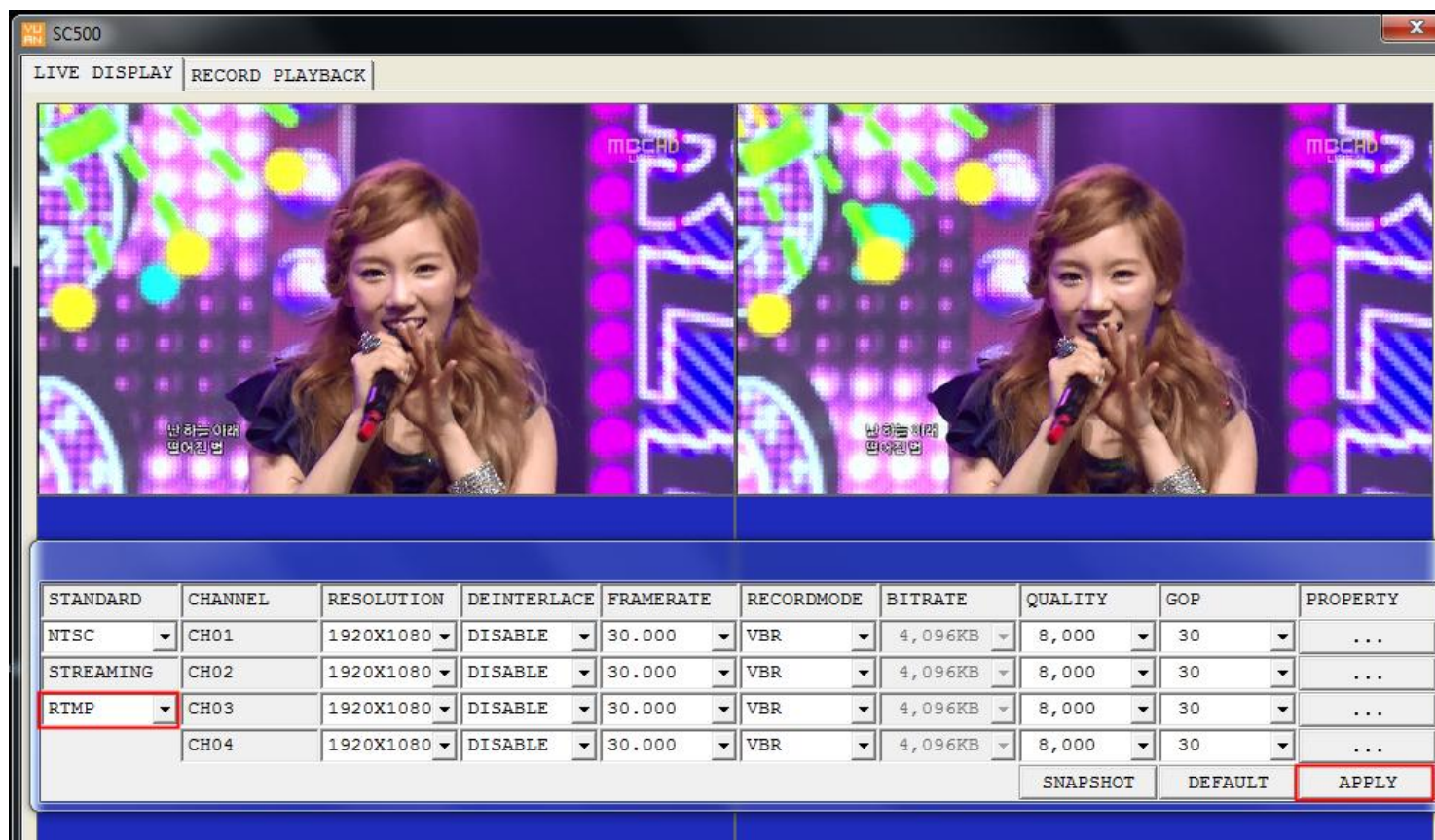
RTMP Server Implement Step

9. The examples below demonstrate how RTMP live streaming running in a client side.



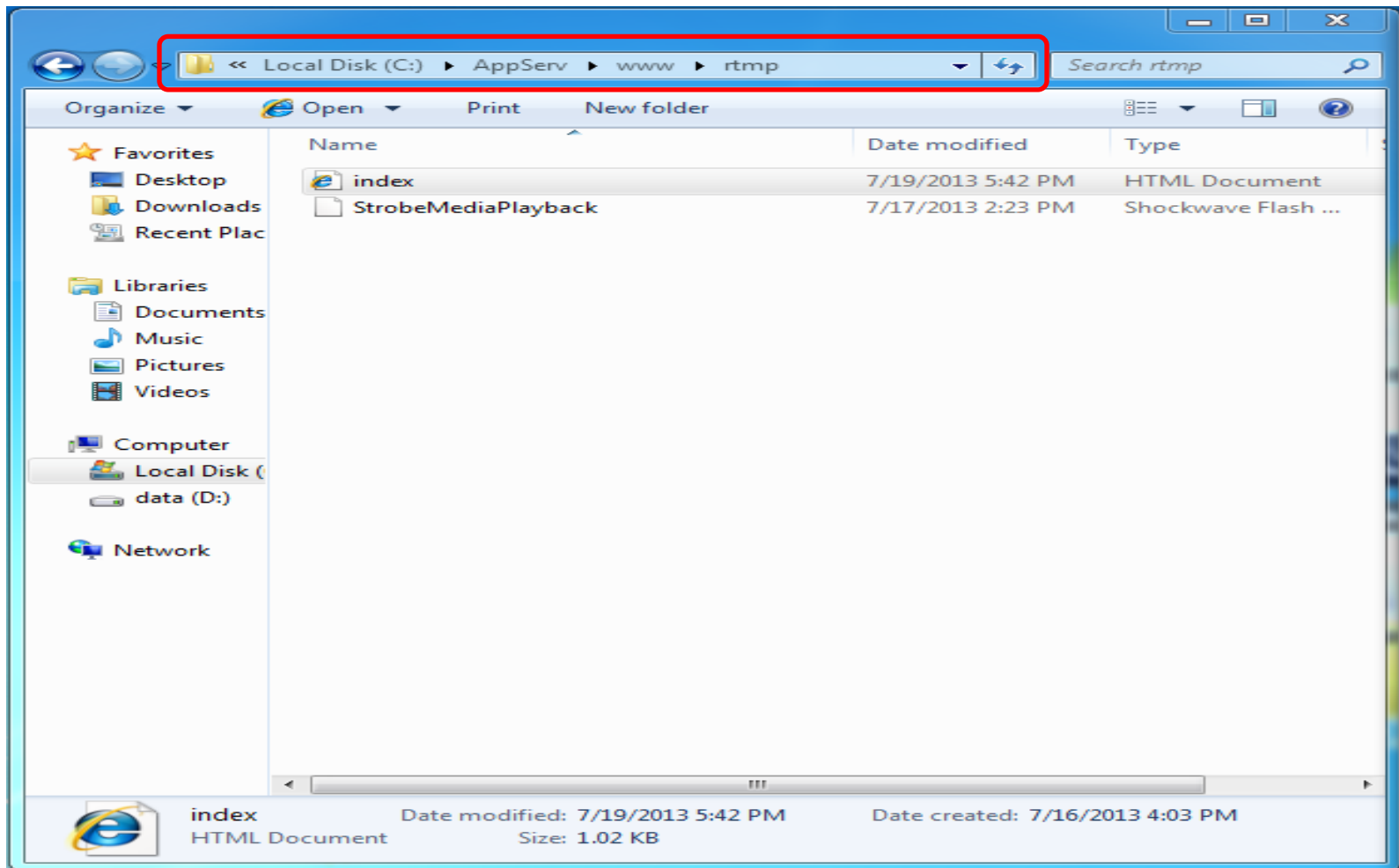
RTMP Server Implement Step

10. Clicking [APPLY] to create RTMP live streaming.



AppServ-win32.2.5.10 Installation Step

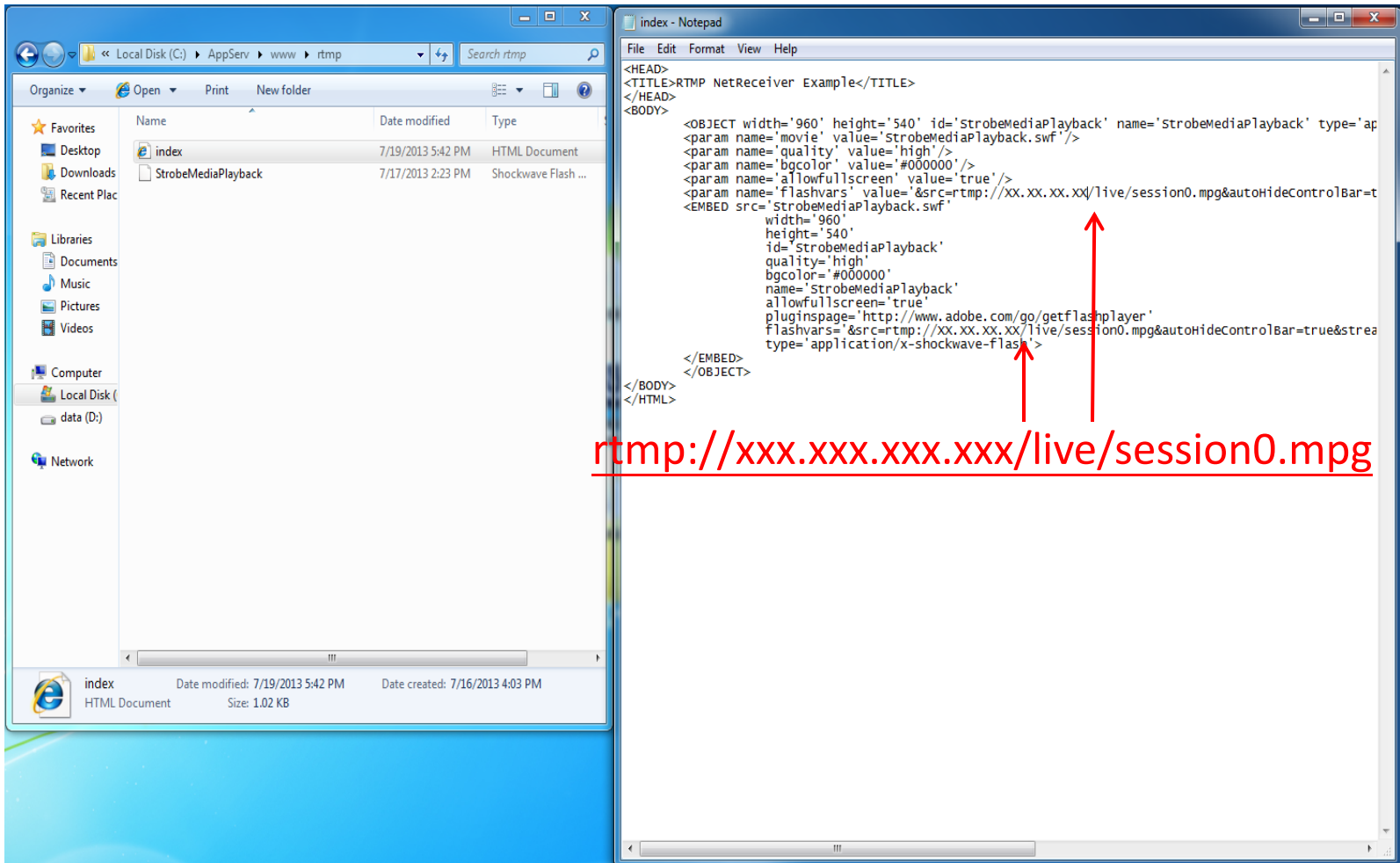
11. Create new sample file RTMP to 「C:\AppServ\www」 folder. Add index.htm and StrobeMediaPlayback in RTMP folder from samples in AMESDK.



AppServ-win32.2.5.10 Installation Step

12. And then, You need modify the default IP address on the index.htm.

For example rtmp://xxx.xxx.xxx.xxx/live/session0.mpg



AppServ-win32.2.5.10 Installation Step

13. Brows to <http://localhost/rtmp/> on URL and then your can see RTMP video streaming in new website.

