

CALU-Graphics (800x480 enabled)

System requirements :

- CarTFT.com CALU-CarPC (CALU-, CALU-M(2)(C)-Series)
- Windows XP/2000/NT
- CTF700, CTF800 or MM400 Display from CarTFT.com

Hint :

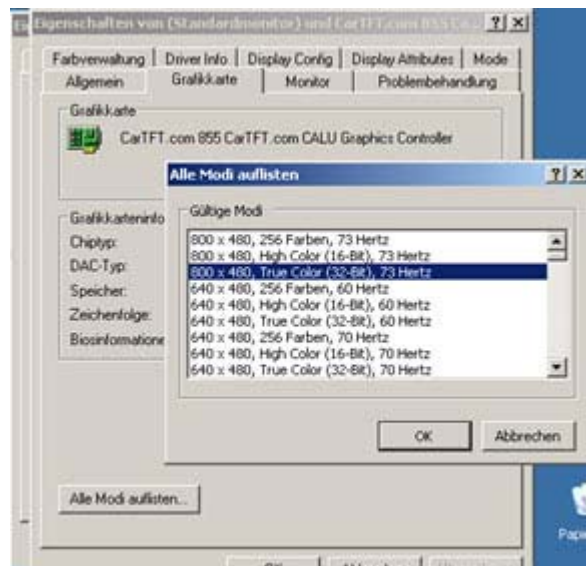
If available, then deinstall the existing graphics driver from system manager, software section (add/remove programs). Then reboot the PC. Windows will try to reinstall the old drivers. Just cancel every installation attempt.

Installation :

- 1.) Switch to „Utilities“-directory of the driver package and start „Setup.exe“ (or „SetupNT.exe“ with Windows NT).
- 2.) Choose „Installs driver and application files“.
- 3.) Confirm the software licence dialog with „I agree“.
- 4.) Confirm all messages, which point to non-Logo compliant drivers with „Continue installation“.
- 5.) After installation is done, the PC will reboot.
- 6.) The driver has been installed.

Enable 800x480-resolution :

Switch to display settings.



Then choose „Advanced“ and „graphics adapter“. Now click on „List all modes“.

The resolution „800x480, True Color (32-bit), 73Hertz“ is listed at the top of the list.

Version 1.0, 29.08.2006

Oliver Aigner

CarTFT.com